



- Analysis of
- ✓ Aldosterone
  - ✓ Cortisol
  - ✓ Cortisone
  - ✓ Estrone
  - ✓  $\beta$ -Estradiol
- in urine by LC-MS/MS

**IVD**

**CE**

**REF** LC91210

To Simplify,  
Improve,  
Standardize

Eureka S.r.l. Lab Division  
Via Enrico Fermi, 25  
60033 Chiaravalle (AN)  
Italy  
Tel +39 071 7450790  
Fax +39 071 7496579  
Follow us on



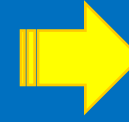
Website

## Background



Hormones affect the function of target tissues, such as an endocrine gland or an organ.

## Clinical need

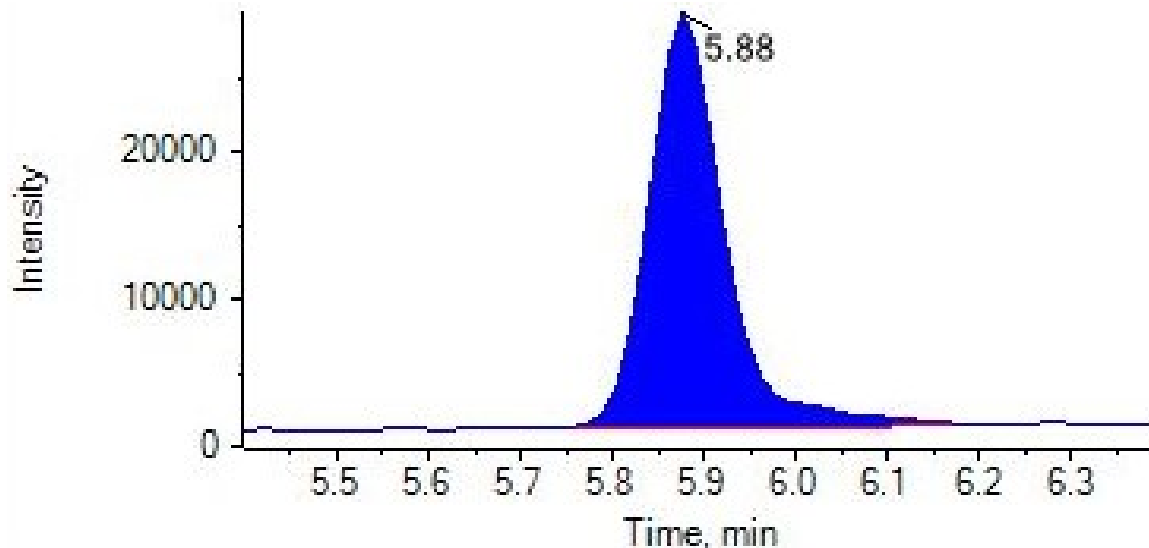


Evaluation of hormone production independently on circadian rhythms, thus eliminating interpretative error linked to the time of sampling.

## Steroid hormones in urine...

### ... Eureka Advantages

- ✓ Quick Sample Preparation: liquid-liquid extraction
- ✓ High sensitivity and great accuracy



**Calibrator for Estrone (100 pg/ml) in urine**

RT 5.88 min

Transition 271.2→133.0

- ✓ Chromatographic run: 15 min
- ✓ Time and Cost Optimization
- ✓ Stability for 3 years
- ✓ Robust, Fast and Reliable CE-IVD method