

ADVANTAGES

- Maximum specificity
- Recovery of analytes ranges from 90% to 100%
- Simple, non-critical and rapid preparative phase
- Ready to use and CE/IVD marked

CONTACT US

Eureka S.r.l. Lab Division
Via Enrico Fermi, 25
60033 Chiaravalle (AN) Italy

Tel: +39 071 745 0790

Fax: +39 071 749 6579

e-mail:
info@eurekaone.com



Website



Follow us on



FORENSIC TOXICOLOGY

September 2022



GC, GC/MS



IFU

URINE

- Benzoyllecgonine , Cocaethylene and cocaine
- Amphetamines
- Methadone and EDDP
- Norbuprenorphine and Buprenorphine
- Opiates
- Δ9-tetrahydrocannabinol-COOH (THC)

WHOLE BLOOD

- Basic Drugs of Abuse
- Amphetamines
- Ethanol
- Cannabinoids

HAIR

- Drugs of Abuse
- Δ-9-THC

OLEOLITES

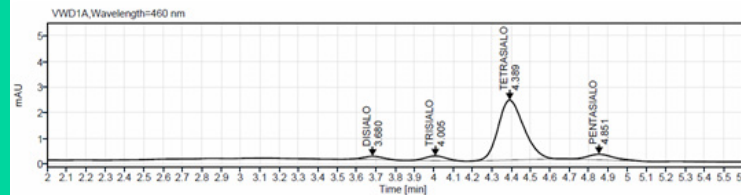
- Phytocannabinoids for Therapeutic use

HPLC



IFU

- CDT TEST in serum by UV-FAST monoreagent



Determination of the disialo transferrin



LC-MS/MS



IFU

URINE

- Drugs of abuse
- Ethylglucuronide and ethylsulfate
- Benzodiazepines and barbiturates

WHOLE BLOOD

- Drugs of abuse

HAIR

- Drugs of abuse
- Δ-9-THC and Δ9-THC-COOH
- Ethylglucuronide

SALIVA

- Drugs of abuse

URINE/HAIR WHOLE BLOOD

- Fast Screening Kit of 1st level for labelled Drugs of Abuse

PLASMA/WHOLE BLOOD

- Fast Toxicological Screening kit

URINE/PLASMA WHOLE BLOOD

- Fast Toxicological Screening kit

URINE

- Fast Toxicological Screening kit

OLEOLITES

- Phytocannabinoids for Therapeutic use

OTHER MATRICES

- Illicit substances on unknown confiscated samples